


LUBING Cable emergency stop kit

In many countries the local regulations for the safety of machines has become stricter during the last years. The installer of the system needs to make sure that his installation matches with the local regulations regarding machine security.

Critical points for the LUBING conveyor system are areas where employees are working long-term next to the conveyor line. Due to the moving conveyor chain these employees are exposed to a higher risk of injury. So it is often necessary to secure these critical points by an additional safety measure.

For this purpose LUBING has created a cable emergency stop kit which allows the immediate stop of the entire conveyor line in case of an emergency. It is suitable for all types of conveyor.

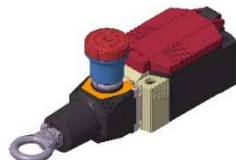
The cable emergency stop kit is available for a distance of up to 15 meters and for a distance of up to 30 meters:

	Item	Description
	185 800 40 15	Cable emergency stop kit 15 m with cable switch SRO-I73, UL/CCC certified
	185 800 40 30	Cable emergency stop kit 30 m with cable switch SRO-I73, UL/CCC certified

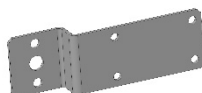
Main components



Cable



Safety cable switch



Holder



Holding profile
with eyebolt

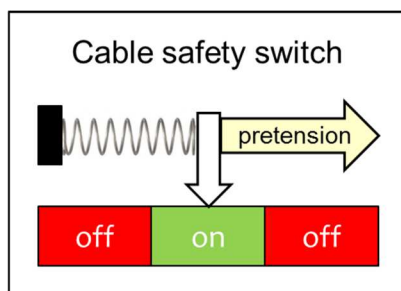


End holder

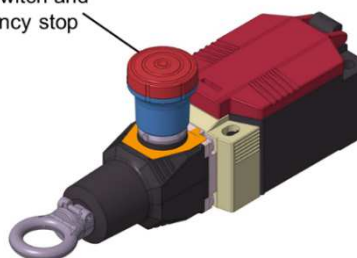


Turnbuckle

For correct operation a pretension on the cable is required. The conveyor line is stopped if pretension is removed (e.g. broken cable). For maximum safety, there is an extra reset switch with integrated emergency stop button on the safety cable switch.



Reset switch and
emergency stop



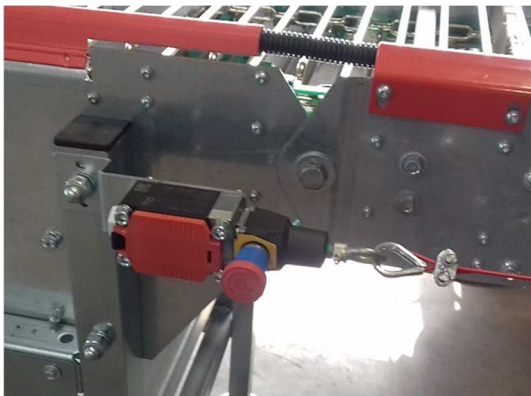
The cable safety switch must be connected with the switch board/control panel for the conveyor on site. Please make sure that the electrical equipment used in switch board/control panel is suitable for the use with safety related devices.

The cable emergency stop kit includes the following main parts plus small components:

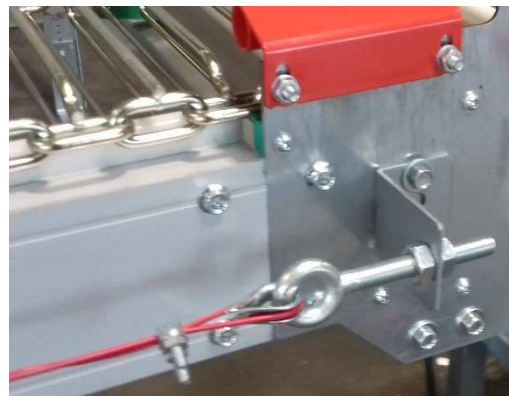
Cable emergency stop kit 15 m	Cable emergency stop kit 30 m	
Item No.	Item No.	Description
53 01 082	53 01 082	Cable safety switch SRO-I73-20
185 520 83 00	185 520 83 00	Holder for cable emergency stop kit SRO-I73
185 600 43 00	185 600 43 00	Holding profile with eyebolt
185 520 85 00	185 520 85 00	End holder for cable safety switch SRO-I73
39 02 203	39 02 206	Cable unit complete

The cable can be installed on inner and outer bends as well as on inclines and declines. The brackets for installation which are part of the cable emergency stop kit can be mounted to existing connection points on the conveyor like aluminium traverses. The pictures below are showing some examples of an installation.

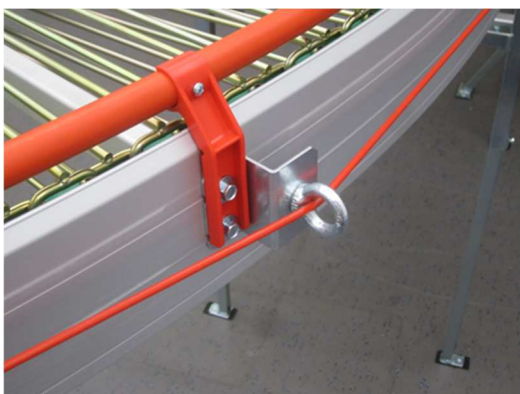
Installation examples:



Installation of safety cable switch on drive unit



Installation of end holder



Installation of holding profile on bend



Installation of holding profile on connecting part